

**Michael Baker**

INTERNATIONAL

*Innovation Done Right...We Make a Difference*



# ChangingLand.COM

Mobile Functionality Demonstration



## About

- ChangingLand Mobile Application helps to see the landbase requests and its status in the mobile device.
- The access to the Application is restricted through a login process, the same ChangingLand web username and password shall be used to access the Mobile application.

## Prerequisites

- All iPhone/iPad models that are having iOS 10 or higher
- All Android Phones/Tablets with 6.0 or above
- A valid ChangingLand username and password

## Download the app

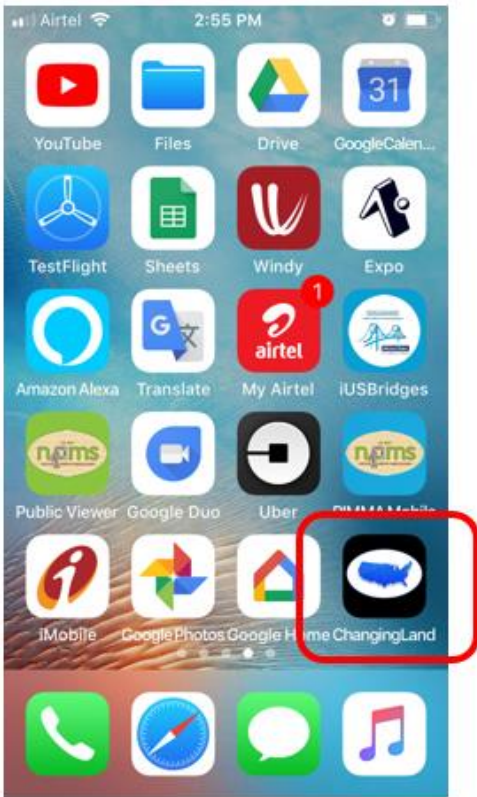
Visit <https://www.changingland.com> from your mobile device browser.

## Install the app

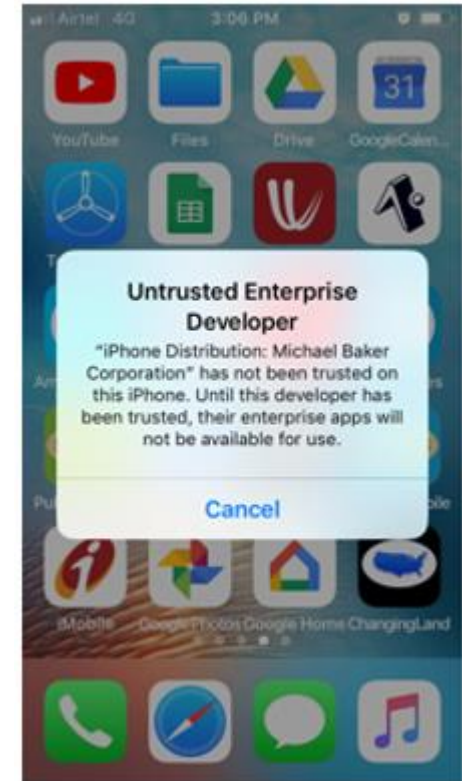
Follow the mobile specific (iOS/Android) installation steps given in the next slide.

## iOS Device (iPhone/iPad)

After downloading the iOS version of ChangingLand App, follow the instructions to install the App. Once installed the App Icon will be shown in the mobile app list.



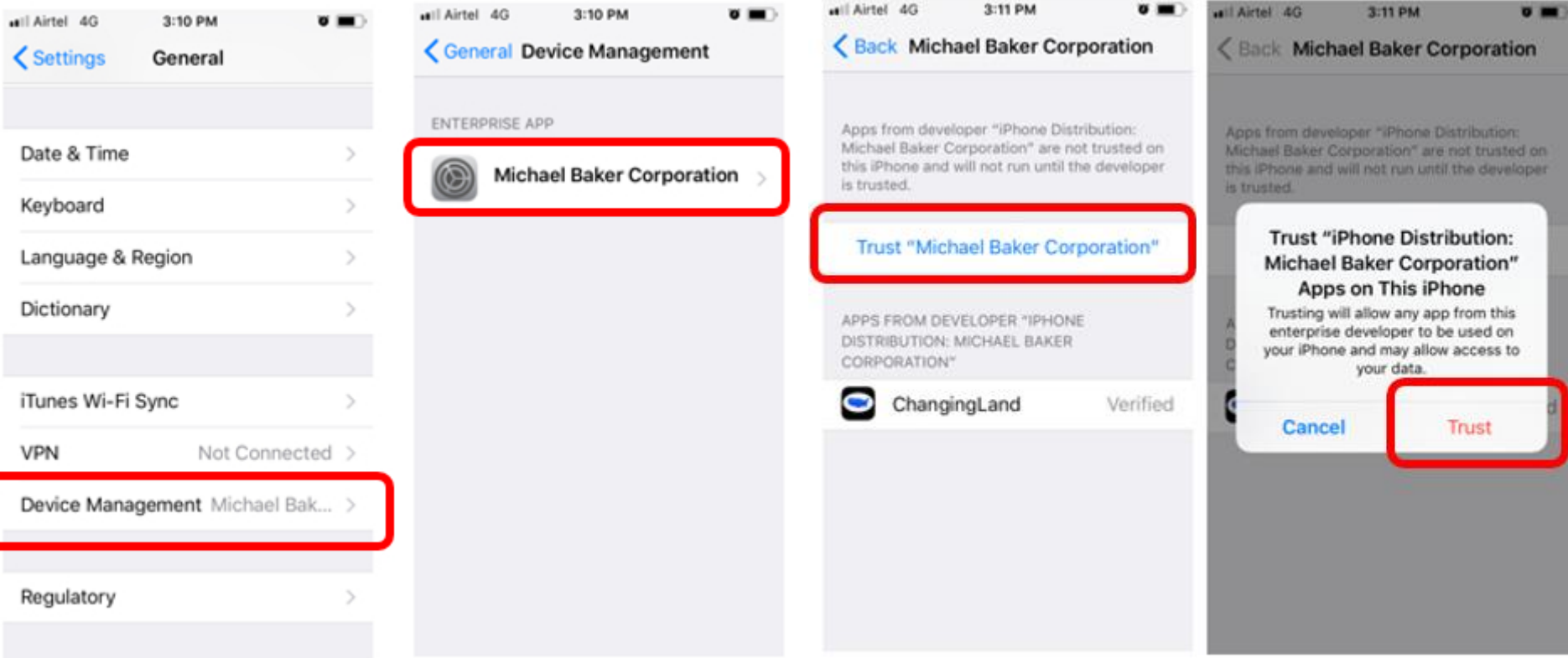
Tap on the “ChangingLand” icon, which will show “Untrusted Enterprise Developer” warning message. Follow the instructions given in the next slide.



## iOS Device (iPhone/iPad)

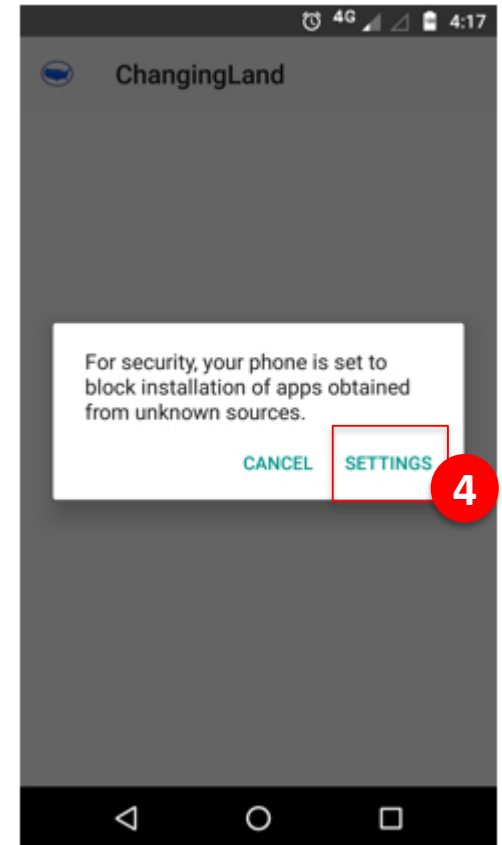
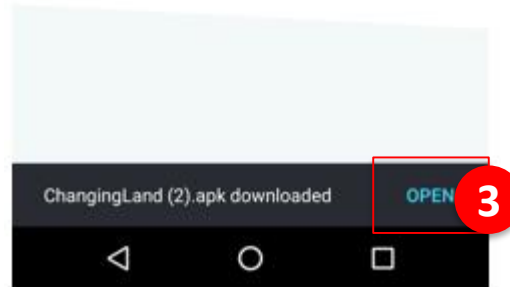
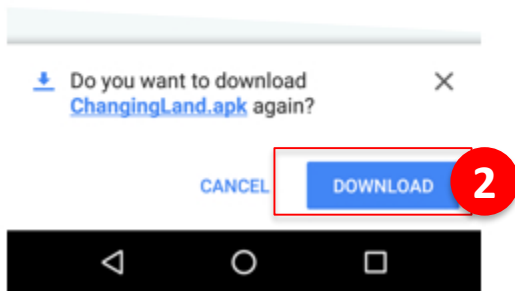
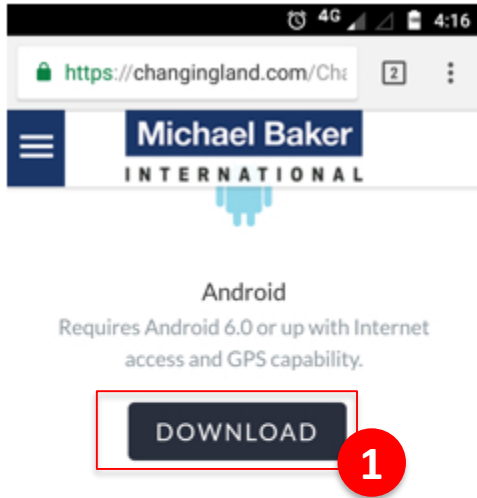
In iOS 9.1 and lower, go to Settings - General - Profiles - tap on your Profile - tap on Trust button.

In iOS 10+, go to: Settings - General - Device Management - tap on your Profile - tap on Trust button.



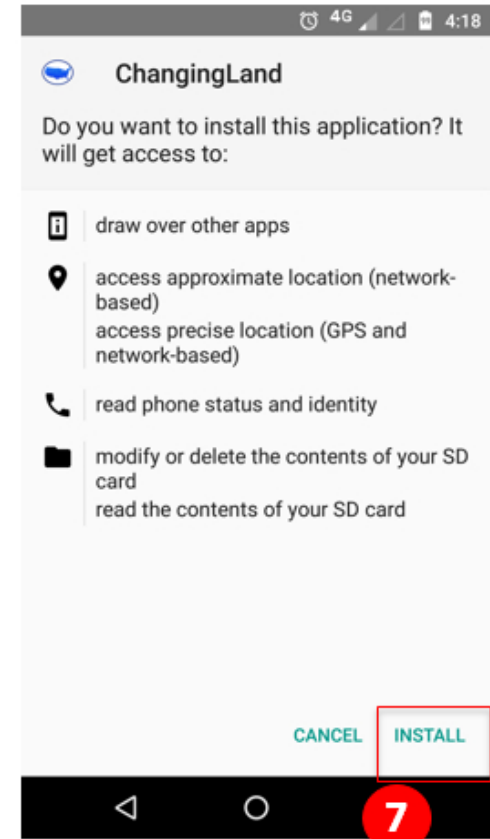
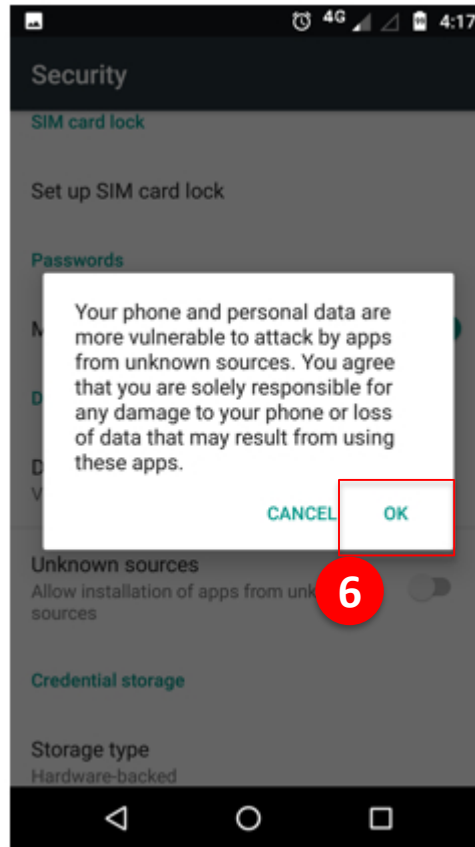
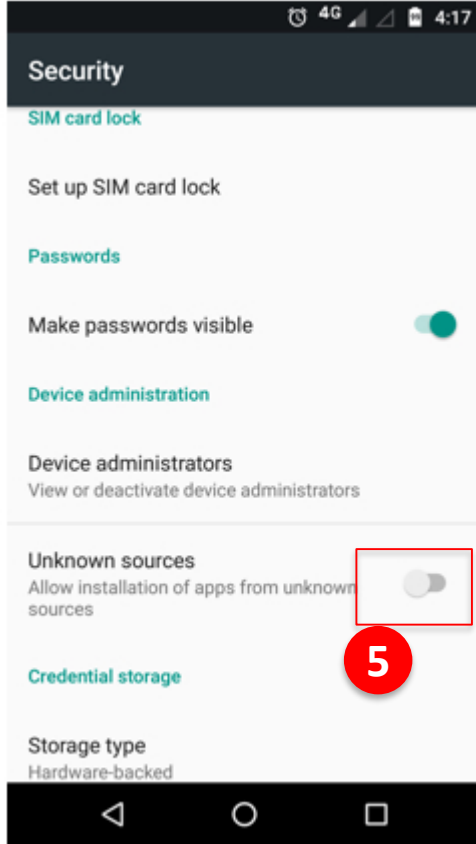
## Android Device (Phone/Tablet)

Follow the instructions to install the App. Once installed the App Icon will be shown in the mobile app list.

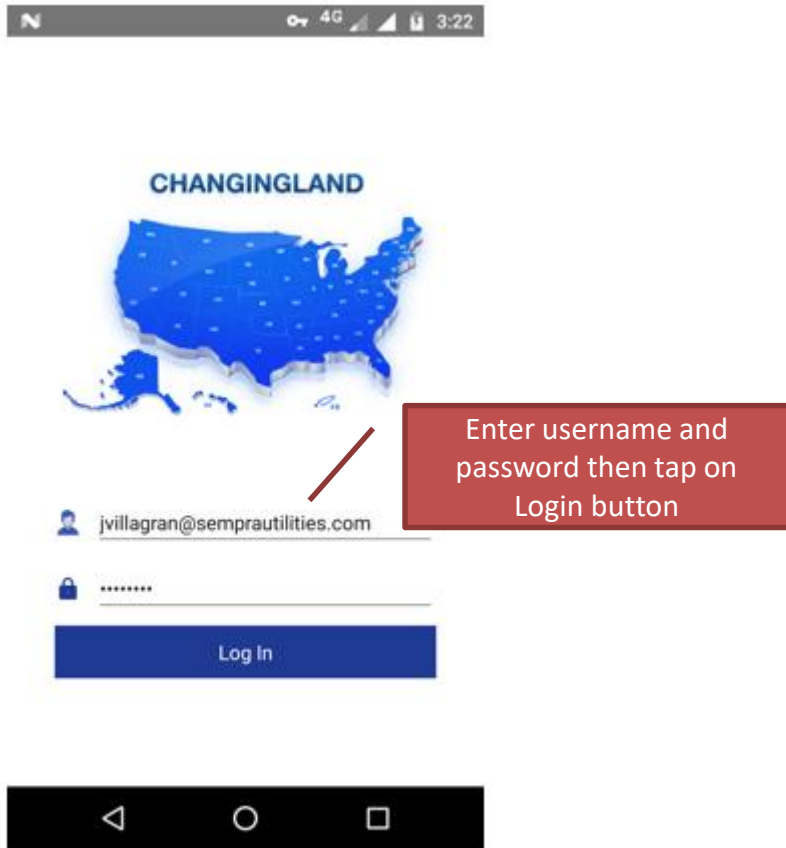


## Android Device (Phone/Tablet)

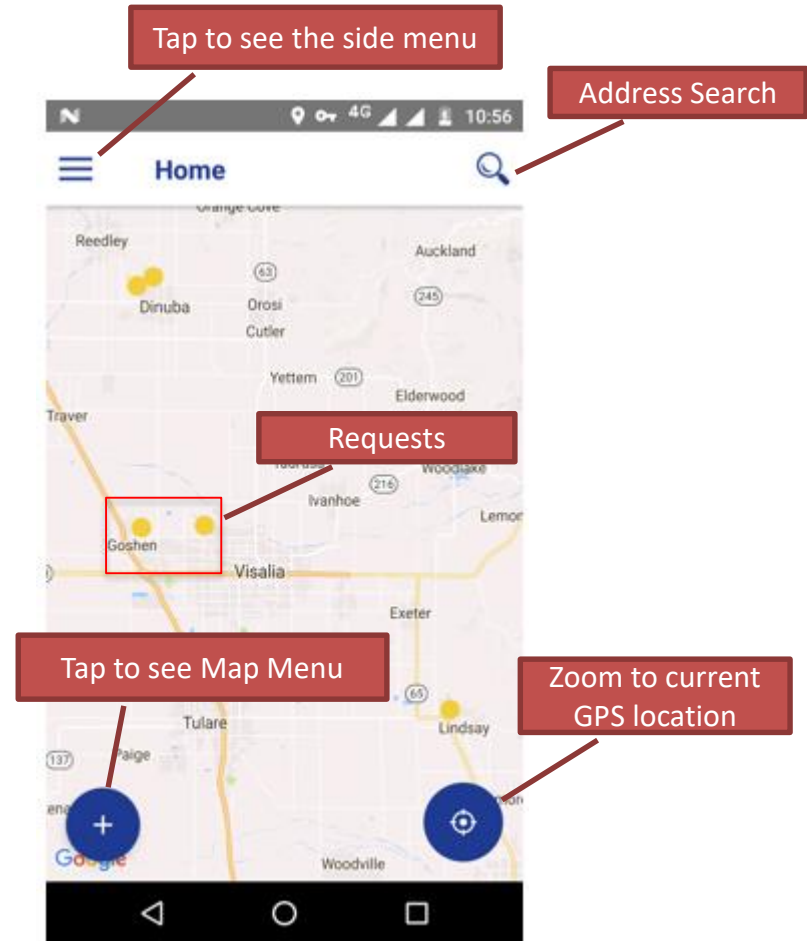
Follow the below instructions to complete the installation.



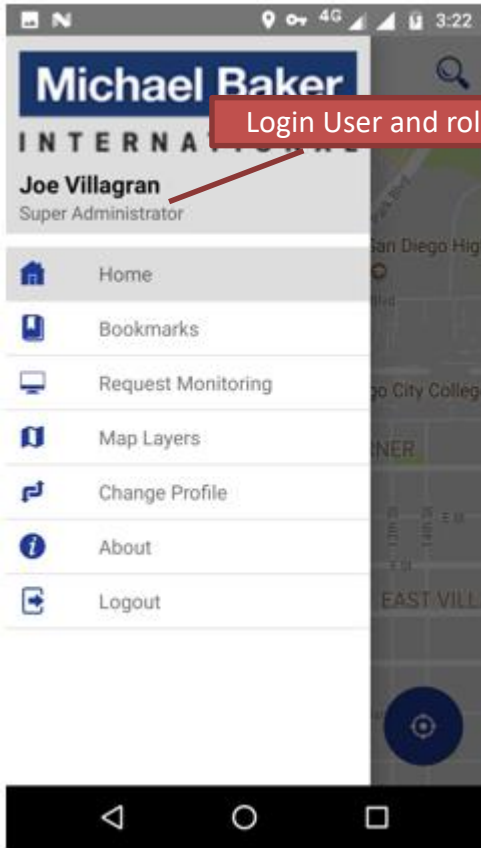
# Login



# Main Page



# Slide Menu



## Slide Menu Options

**Home:** Return to the main map screen

**Bookmarks:** Shows the bookmarks. The bookmarks are shared with the web version of ChangingLand.

**Request Monitoring:** Shows all the requests under the current profile.

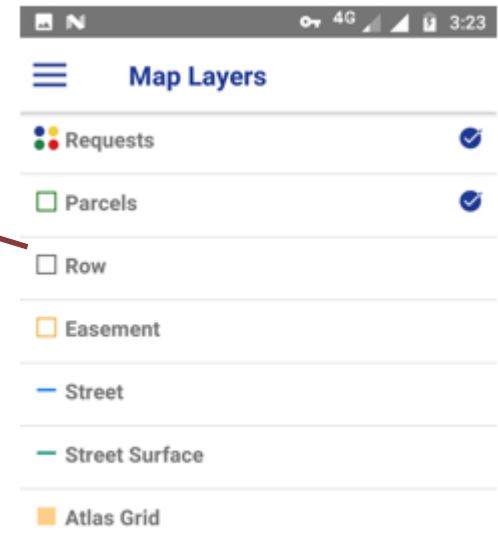
**Map Layers:** Show available map layers in this profile.

**Change Profile:** If the user is a member of multiple profile, use this option to switch profile.

**About:** Shows current version

**Logout:** Exist from the app.

Select layers to show on the map



Map layers shown here may vary based on the current user profile



# Request Monitoring

Use this option to view the details of current submitted requests.

The image consists of three screenshots from a mobile application, illustrating the request monitoring workflow. Each screenshot has a red callout box with white text and a red arrow pointing to a specific UI element.

- Left Screenshot:** Shows the 'Request Monitoring' screen with a list of requests. A red box highlights the filter icon (three vertical bars) in the top right corner. A callout box above it says 'Tap to filter requests'.
- Middle Screenshot:** Shows the 'Details' screen for a request. A red box highlights the 'View on map' button at the bottom. A callout box above it says 'Tap to view the request on the map'.
- Right Screenshot:** Shows the 'Filter' screen with options for 'Request Type' and 'Status'. A red box highlights the 'Apply' button at the bottom. A callout box above it says 'Request Filter Options'.

Request 96 details (from middle screenshot):

- Request ID: 96
- Title: Tract Map Updates
- User: Brett Kehler
- Period: 05/02/2018 - 05/09/2018
- Status: In Process
- Turn Around Time: 5 Days
- Title Information: SEMPRA TMU 164239 - P-152901 TMU
- Parcel Number: 152901

## Identify layer

- Make the required layer visible using Map Layers window. Only visible layers can be identified.
- Tap on Map menu (+ Button) and select Identify option.
- From the displayed menu, Choose Identify/Layer name (for example, Parcels) option.
- If there are features found at the selected location, the features will be shown in a grid. Otherwise a warning message will get displayed.

Identify - Total 1 record(s)

6210749

Object ID  
6210749

---

APN  
53419605

---

Zip  
921015520

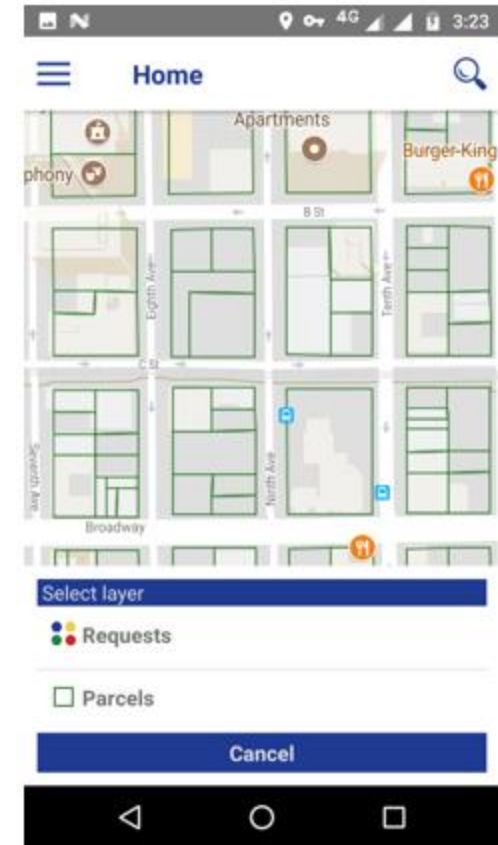
---

County  
SAN DIEGO

---

Date Created

Close



Identify Result will be shown in a popup window. If there are multiple results returned, user can select the one from the dropdown. Tap on Close button to return to the Main map.